



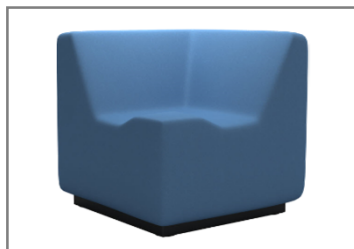
520-10
30"d x 54"w x 30"h
22.5" arm ht | 16" seat ht



520-20
30"d x 30"w x 30"h
22.5" arm ht | 16" seat ht



520-50
30"d x 30"w x 30"h
16" seat ht



520-60
30"d x 30"w x 30"h
16" seat ht



520-55
26"d x 25"w x 29.5"h
16.5" seat ht



520-80
30"d x 54"w x 16"h

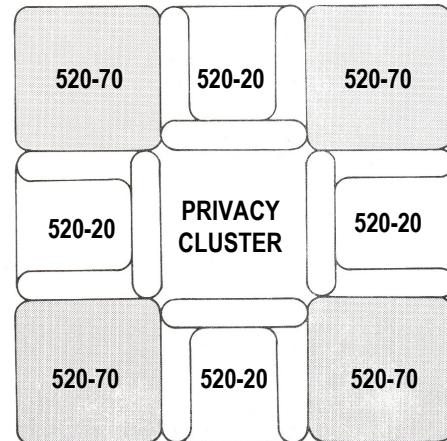
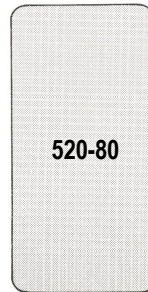
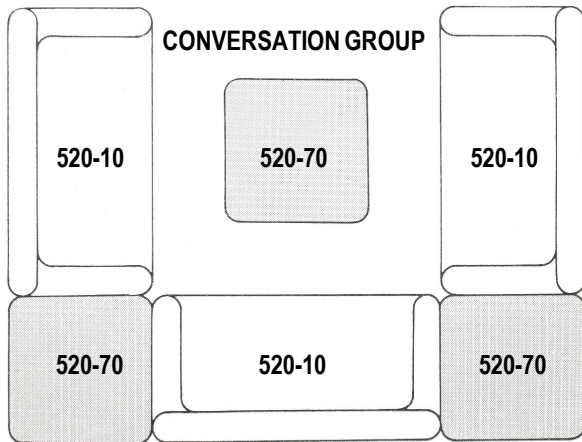
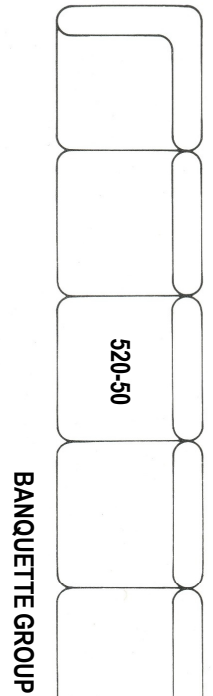
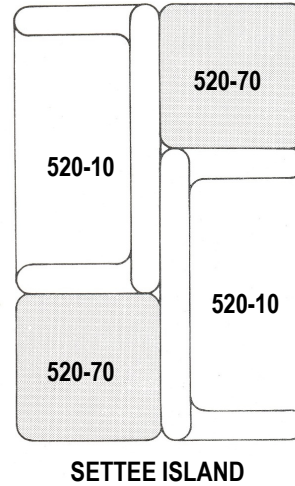
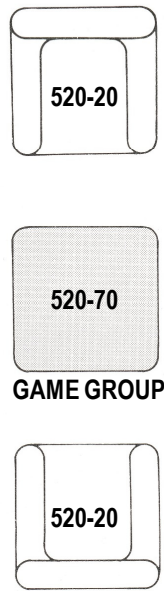
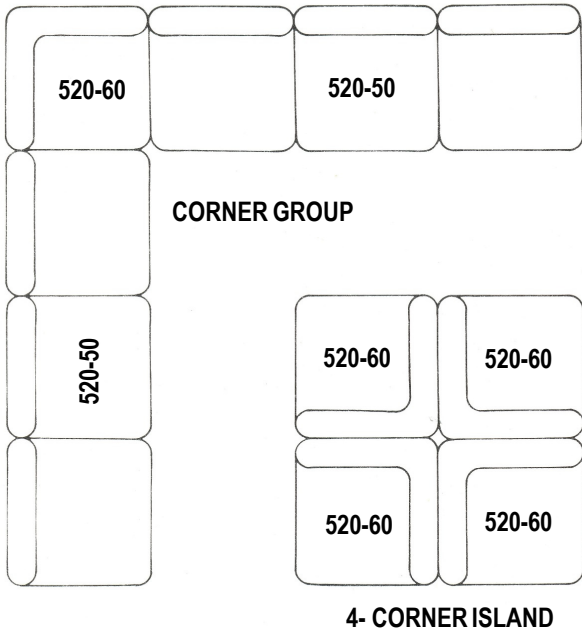


520-70
30"d x 30"w x 16"h

Moduform's 520 series collection of modular and configurable lounge seating is perfect for environments that need:

- Heavy and bulky furniture that is difficult to lift
- Ease of maintenance and cleanability
- Contraband resistance
- Ligature resistance
- Fluid, puncture and scratch resilient
- Seamless and high-impact
- Modular design that can be arranged into different groupings
- Foam filled and soft for comfort

520 is filled with a pressure molded, two part, high resiliency flexible foam that, while it cures, bonds to the interior skin of our lounge furniture. The exterior polyvinyl chloride surface is either 200 mils or 250 mils thick, seamless and leather textured. There are no frames, no springs, no hard edges. This offers greater comfort, safety, security and the ability to clean with steam, mild detergents or bleach-based cleaners that aid in the control of blood borne pathogens. The base is one-piece molded high-impact plastic and includes a full perimeter gasket to prevent fluid access.



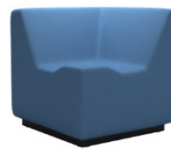
520-50
Armless Chair



520-20
Arm Chair



520-10
Settee



520-60
Corner Chair



520-80
Bench | Table



520-70
Ottoman





Sky
210



Plum
215



Leaf
220



Splash
225



Canyon
230



Burgundy
318



Huckleberry
403



Slate Blue
426



Sandstream
700

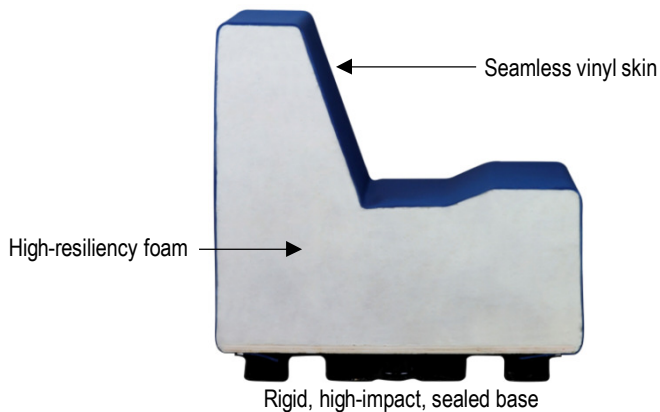


Flannel Grey
845



Black
900

Colors are digital representations and may not exactly match actual product. Color chips are available upon request.



Standard Features:

- Grade 7 is 200 mils | Grade 9 is 250 mils thick
- Rotationally molded seamless vinyl
- Roto vinyl is seamless without springs, frames, exposed edges or hard surfaces
- Easily cleaned with steam, bleach-based and other detergents
- Polyvinyl Chloride is fully pigmented resulting in homogeneous color
- Interior is pressure molded, high-resiliency, one-piece flexible foam
- Base is rigid, high-impact plastic with perimeter gasket
- Meets Cal TB 133

 **MODUFORM**